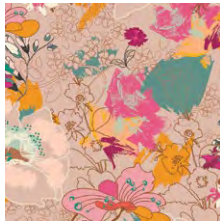


entwine

QUILT DESIGNED BY PAT BRAVO

LEGENDARY

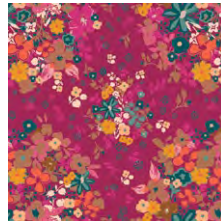
FABRICS DESIGNED BY PAT BRAVO



LGD-49702
WONDERLUST BOHO



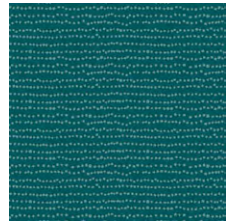
LGD-49703
BRIT BOUTIQUE BOHO



LGD-49704
FEMME METALE BOHO



LGD-49705
MEADOW BOHO



LGD-49710
FLECKS BOHO



LGD-49706
COLLAR ENDS BOHO



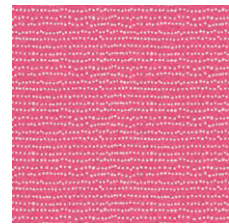
LGD-49707
COLLAR ENDS SOUL



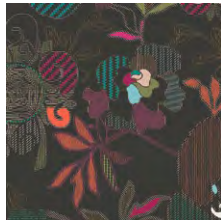
LGD-49708
TRINKETS BOHO



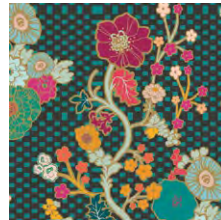
LGD-49709
TRINKETS SOUL



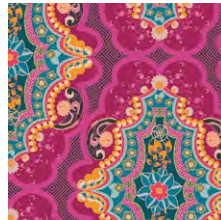
LGD-49711
FLECKS SOUL



LGD-39700
STITCHED ANTHOMANIA BOLD



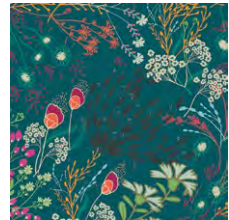
LGD-39701
MARQUETERIE BOLD



LGD-39703
BRIT BOUTIQUE BOLD



LGD-39704
FEMME METALE BOLD



LGD-39705
MEADOW BOLD



LGD-39706
COLLAR ENDS BOLD



LGD-39707
COLLAR ENDS DREAMS



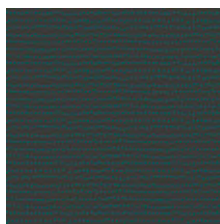
LGD-39708
TRINKETS BOLD



LGD-39709
TRINKETS DREAMS



LGD-39710
FLECKS BOLD



LGD-39711
FLECKS DREAMS





FINISHED SIZE | 64" x 83"

FABRIC REQUIREMENTS

Fabric A	LGD-39709	7/8 yd.
Fabric B	LGD-39705	1/2 yd.
Fabric C	LGD-49710	7/8 yd.
Fabric D	LGD-39701	1/4 yd.
Fabric E	LGD-39711	1/2 yd.
Fabric F	LGD-39700	1/4 yd.
Fabric G	LGD-39708	1/2 yd.
Fabric H	LGD-49706	1/4 yd.
Fabric I	LGD-49703	1/4 yd.
Fabric J	LGD-39706	3/4 yd.
Fabric K	LGD-49709	5/8 yd.
Fabric L	LGD-39704	1/2 yd.
Fabric M	LGD-39707	1/4 yd.
Fabric N	LGD-49707	5/8 yd.
Fabric O	LGD-49705	1/4 yd.
Fabric P	LGD-49708	1/4 yd.
Fabric Q	LGD-39703	1/4 yd.
Fabric R	LGD-49702	1/2 yd.
Fabric S	LGD-49704	1/2 yd.
Fabric T	LGD-49711	1/2 yd.
Fabric U	LGD-39710	1/4 yd.

BACKING FABRIC

LGD-39700 5 yds. *(Suggested)*

BINDING FABRIC

LGD-49710 (Fabric **C**) *(Included)*



- Eight (8) 6 7/8" squares from fabric **E**.
- One (1) 6 1/2" square from fabric **E**.
- Four (4) 6 7/8" squares from fabric **F**.
- Eleven (11) 6 7/8" squares from fabric **G**.
- Four (4) 6 7/8" squares from fabric **H**.
- Two (2) 6 1/2" squares from fabric **H**.
- Three (3) 6 7/8" squares from fabric **I**.
- One (1) 6 1/2" square from fabric **I**.
- Fourteen (14) 6 7/8" squares from fabric **J**.
- Twelve (12) 6 7/8" squares from fabric **K**.
- Two (2) 6 1/2" squares from fabric **K**.
- Nine (9) 6 7/8" squares from fabric **L**.
- Six (6) 6 7/8" squares from fabric **M**.
- Fourteen (14) 6 7/8" squares from fabric **N**.
- Five (5) 6 7/8" squares from fabric **O**.
- One (1) 6 1/2" square from fabric **P**.
- Three (3) 6 7/8" squares from fabric **P**.
- Two (2) 6 7/8" squares from fabric **Q**.
- Six (6) 6 7/8" squares from fabric **R**.
- Two (2) 6 1/2" squares from fabric **R**.
- Eight (8) 6 7/8" squares from fabric **S**.
- Four (4) 6 7/8" squares from fabric **T**.
- Three (3) 6 1/2" squares from fabric **T**.
- Three (3) 6 7/8" squares from fabric **U**.

CUTTING DIRECTIONS

1/4" seam allowances are included.
WOF means width of fabric.

- Twenty (20) 6 7/8" squares from fabric **A**.
- Nine (9) 6 7/8" squares from fabric **B**.
- One (1) 6 1/2" square from fabric **B**.
- Ten (10) 6 7/8" squares from fabric **C**.
- Two (2) 6 1/2" squares from fabric **C**.
- Five (5) 6 7/8" squares from fabric **D**.
- One (1) 6 1/2" square from fabric **D**.

